

# STONEMILL

catalysts

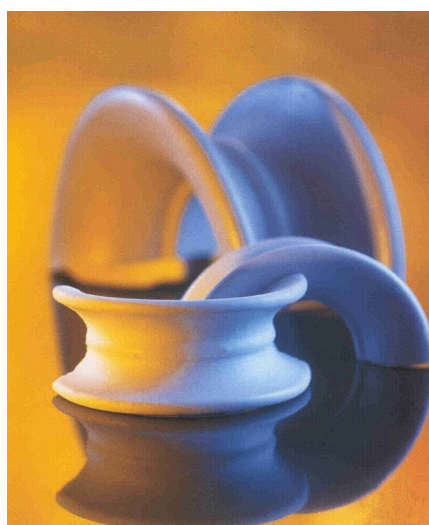
## CERAMIC FILLINGS

### Ceramic saddles

SIZES : from 1/4" (6 mm) to 3" (76 mm)

Chemical composition :

Al <sub>2</sub> O <sub>3</sub>	22% mini
SiO <sub>2</sub>	68%
Fe <sub>2</sub> O <sub>3</sub> + TiO <sub>3</sub>	< 2%
K <sub>2</sub> O	< 3 %
Others	< 1%



Physical Properties :

Acid resistance (ASTM C277 )	> 99.5%
Water adsorption (ASTM C373)	< 0.5%
Heat capacity	0.24 Kcal/kg/°C
Thermal resistance	1,100 °C

<b>Diameter</b>	<b>Diameter</b>	<b>Surface space</b>	<b>Bulk density</b>	<b>Free Space</b>
inches	mm	m <sup>2</sup> /m <sup>3</sup>	kg/m <sup>3</sup>	%
1/4	6	985	900	62
1/2	13	622	660	73
3/4	19	335	660	74
1	25	255	645	74
1 1/2	38	166	625	75
2	51	120	580	77
3	76	92	540	79